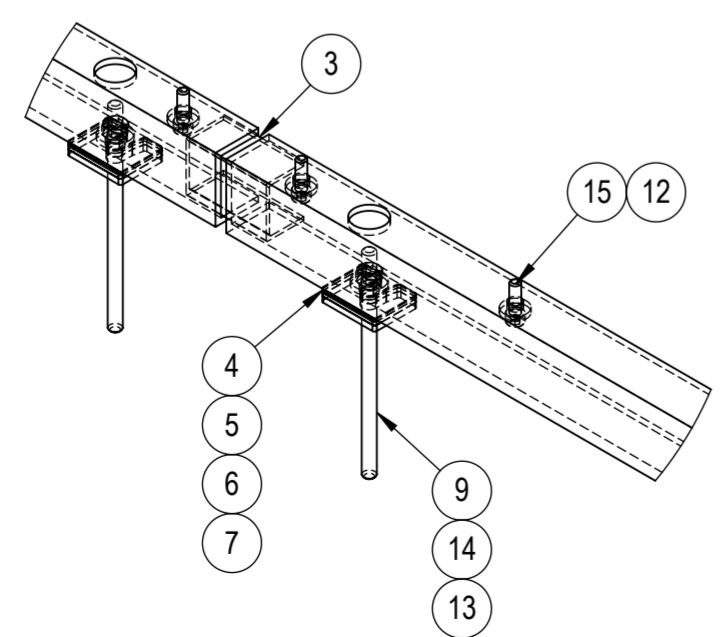
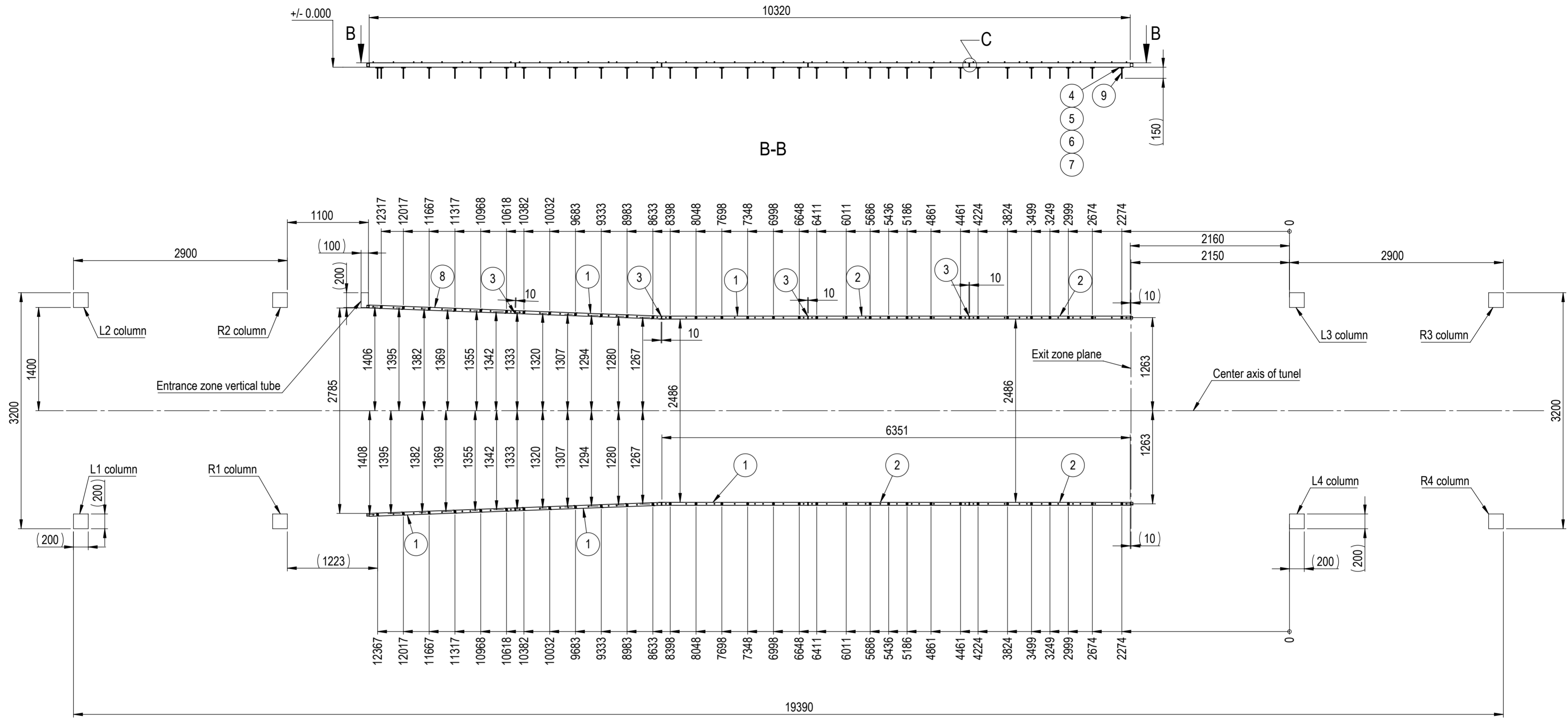


A
SCALE: 1 : 5

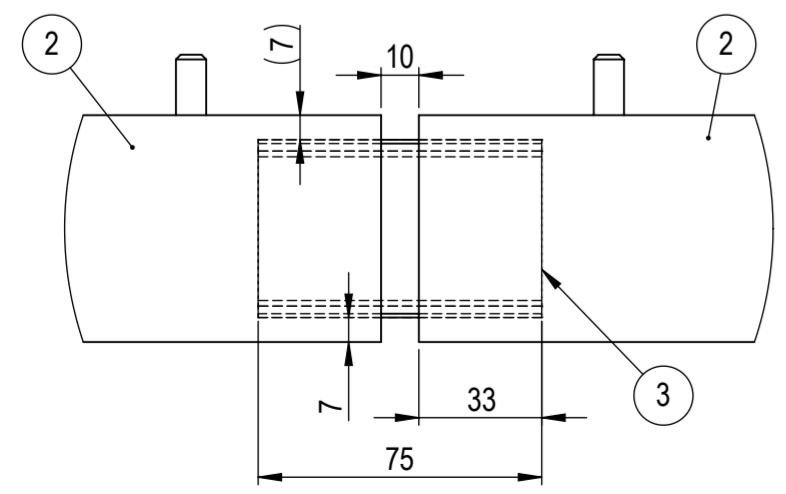


NO.	PART NO	DESCRIPTION	MATERIAL	PROCESSING	REVISION	WEIGHT	QTY
1	106-01150-01	Aluminum U-profile 1	6060F22 T6	CND ANO		3.40	5
2	106-01150-02	Aluminum U-profile 2	6060F22 T6	CND ANO		3.73	4
3	106-01150-03	Plastic spacer 3	PETG	3DP		0.03	12
4	106-01150-04	Shimplate 1mm	AISI 304	LC		0.01	64
5	106-01150-05	Shimplate 2mm	AISI 304	LC		0.03	64
6	106-01150-06	Shimplate 3mm	AISI 304	LC		0.04	64
7	106-01150-07	Shimplate 5mm	AISI 304	LC		0.07	64
8	106-01150-08	Aluminum U-profile 3	6060F22 T6	CND ANO		3.28	1
9	DIN 976-1 M10 A2-70 L=200	Metric stud bolt	A2-70	COTS		0.12	64
10	HILTI HIT-HY 200-A V3	Adhesive anchor 500ml	-	COTS		0.00	1
11	UltraGlaze SSG4600 (black) 1l	Silicone structural glazing adhesive	-	COTS		0.00	1
12	DIN7349 M8	Thick washer	A2	COTS		0.01	102
13	DIN7349 M10	Thick washer	A2	COTS		0.01	64
14	ISO4032 (DIN934) M10	Hex nut	A2-70	COTS		0.01	64
15	ISO4762 (DIN912) M8x25	Hex socket bolt	A2-70	COTS		0.02	102

		MATERIAL	WEIGHT	DEBURR AND BREAK SHARP EDGES	REVISION	DATE
		-	56.617 Kg	DO NOT SCALE DRAWING		9/11/2025
Designed by D. Dislers Drawn by K. Sulcs Technical ref.		SURFACE PROTECTION	MACHINING	THERMAL CUTTING	WELDING	SCALE
		-	ISO 2768 mK	ISO 9013 441	ISO 13920 BF	1:20
		PART NO.		106-01150-00		
		DESCRIPTION		Glass fixing profiles		
						SHEET 1/2



C
SCALE: 1 : 2



Notes:

1. Position aluminium U-profiles (1) ; (2) & (8) on the concrete and mark anchor hole locations on concrete surface.
2. Drill Ø12mm holes in concrete. Recommended anchor embedment depth is 150mm.
3. Prepare holes and install anchor studs (9) using HILTI HIT-HY 200-A V3 adhesive anchor. Strictly follow HILTI installation instructions.
4. Fasten aluminium U-profiles (1) ; (2) & (8) at designated locations. Use shim plates (4) ; (5) ; (6) & (7) beneath profile if necessary to achieve level.
5. Glue the plastic spacers (3) at aluminium U profile joint locations using Ultra Glaze SSG4600 silicone adhesive. Seal any gaps between spacers and profile with the same adhesive.
6. Remove all excess adhesive residue from all surfaces.

NO.	PART NO	DESCRIPTION	MATERIAL	PROCESSING	REVISION	WEIGHT	QTY
1	106-01150-01	Aluminum U-profile 1	6060F22 T6	CND ANO		3.40	5
2	106-01150-02	Aluminum U-profile 2	6060F22 T6	CND ANO		3.73	4
3	106-01150-03	Plastic spacer 3	PETG	3DP		0.03	12
4	106-01150-04	Shimplate 1mm	AISI 304	LC		0.01	64
5	106-01150-05	Shimplate 2mm	AISI 304	LC		0.03	64
6	106-01150-06	Shimplate 3mm	AISI 304	LC		0.04	64
7	106-01150-07	Shimplate 5mm	AISI 304	LC		0.07	64
8	106-01150-08	Aluminum U-profile 3	6060F22 T6	CND ANO		3.28	1
9	DIN 976-1 M10 A2-70 L=200	Metric stud bolt	A2-70	COTS		0.12	64
10	HILTI HIT-HY 200-A V3	Adhesive anchor 500ml	-	COTS		0.00	1
11	UltraGlaze SSG4600 (black) 1l	Silicone structural glazing adhesive	-	COTS		0.00	1
12	DIN7349 M8	Thick washer	A2	COTS		0.01	102
13	DIN7349 M10	Thick washer	A2	COTS		0.01	64
14	ISO4032 (DIN934) M10	Hex nut	A2-70	COTS		0.01	64
15	ISO4762 (DIN912) M8x25	Hex socket bolt	A2-70	COTS		0.02	102

		MATERIAL	WEIGHT	DEBURR AND BREAK SHARP EDGES	REVISION	DATE
		-	56.617 Kg	DO NOT SCALE DRAWING		9/11/2025
Designed by D. Dislers Drawn by K. Sulcs Technical ref.		SURFACE PROTECTION	MACHINING	THERMAL CUTTING	WELDING	SCALE
		-	ISO 2768 mK	ISO 9013 441	ISO 13920 BF	1:40
		PART NO.		REVISION		DATE
		106-01150-00				9/11/2025
		DESCRIPTION		SCALE		FORMAT
		Glass fixing profiles		1:40		A2
						SHEET 2/2